

## SUMMARY

Application Enabler (AE) integrates business applications with OnBase, providing complete interaction between the business applications screen data and the related OnBase documents, content and process management. The integration is point-and-click configurable, requiring no custom programming, scripting or modifications. Application Enabler has had proven success integrating with hundreds of Windows®, Web-based, Java™, terminal-based and *Microsoft Dynamics GP™* applications.

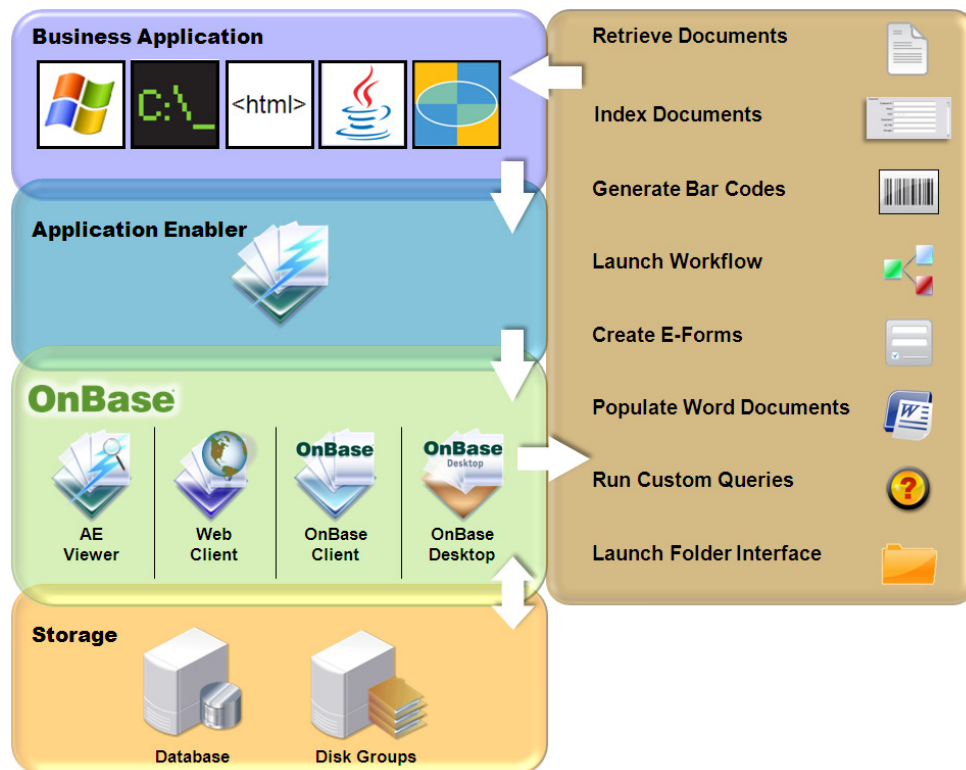
## KEY BENEFITS

- **Increases user productivity** by eliminating application switching and automating manual tasks.
- **Improves data accuracy and reduces rekeying of information** by pulling data directly from the business application screen.
- **Expedites and improves business decision making** by delivering single-click, immediate access to supporting documents.
- **Reduces training costs and accelerates user adoption** by allowing users to remain in their familiar business applications.
- **Eliminates custom integration expense** by providing point-and-click integration.
- **Minimizes integration cycles** through ease of configuration and speed of deployment.

## BUSINESS APPLICATION

- **Healthcare:** Patient history and insurance documents can be quickly accessed directly through their patient management system. This streamlines the patient registration process and allows physicians to quickly access electronic records.
- **Insurance:** Supporting claim documents can be imported, auto-indexed and associated to an existing claim through the policy processing system, increasing accuracy and consistency promoting data integrity.
- **Financial Services:** A bank or credit union can deploy Application Enabler to access customer signature cards and ID cards at the teller line. Customer Service Representatives will be able to view customer identification at the time of presentment to verify customer identity and reduce teller line fraud.
- **ERP System:** Information included in an ERP system can be used to scrape data and use as keywords when automatically indexing documents. Additionally, documents stored in OnBase could be retrieved with a simple double-click in the ERP system. This allows workers to continue value-added tasks, rather than searching for documents.

## DESIGN

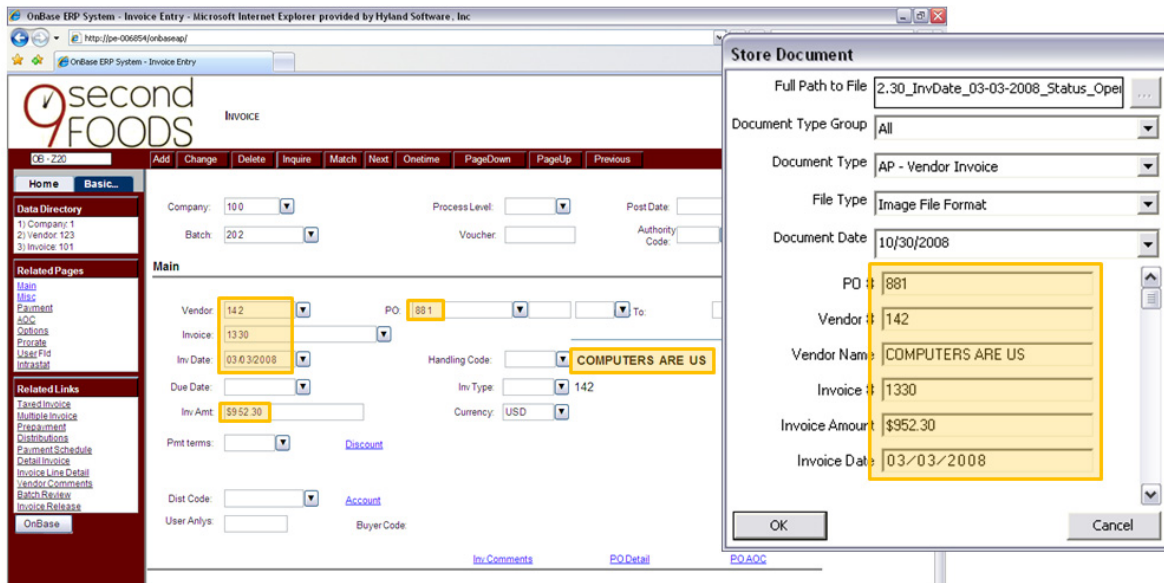


Application Enabler provides organizations the ability to access OnBase content directly from their business application. This integration goes beyond retrieval and allows users to index documents, access Workflows, create E-Forms, launch the Folder Interface, etc. Application Enabler can use the AE Retrieval Window, Web Client, OnBase Client and/or OnBase Desktop to display content to end users.

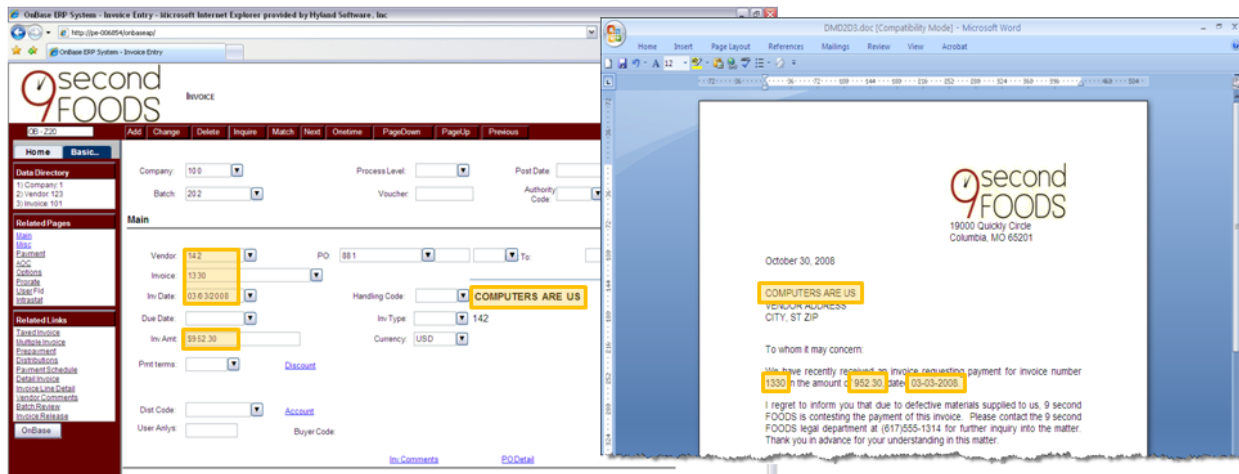
## KEY FEATURES

- **Retrieve documents** stored in OnBase directly from the business application.
- **Index documents** using information scraped directly from the business application's screen.
- **Generate bar code sheets** to automate the indexing of physical documents when scanned into OnBase.
- **Launch Workflow** directly from the business application, enabling business process automation.
- **Create E-Forms** using screen-scraped information to populate specific fields of the E-Form.
- **Populate Microsoft Word documents** by applying information pulled from the business application to a Word template, ensuring data consistency.
- **Run a Custom Query** to quickly display all associated content connected to a business transaction.
- **Launch the OnBase Folder interface** to view all documents related to a business transaction in a contextually organized structure.

## INTERFACE



Regardless of whether using the OnBase Client, Web Client or OnBase Desktop, Application Enabler can scrape values from the business application and use them as Keyword values when indexing a document.



Application Enabler can scrape values from a business application screen and use those values to populate a Microsoft Word document that can be stored in OnBase and even allows further editing of the document.

# HYLAND SOFTWARE